

learning
academy
partnership



**ANNUAL REPORT
TO PARENTS
2021-2022**

CONTENTS

4	Welcome from Trust Lead, Tracey Cleverly
5	Welcome from Chair of Trustees, Richard Vaughton
6	Our Mission, Vision and Core Values and Beliefs
7	Governance
8	Trust Highlights this academic year
10	Educational Outcomes for Pupils
11	Financial Overview
12	Our Journey
13	Ilsham C of E Academy
14	Ellacombe C of E Academy
15	Warberry C of E Academy
16	All Saints Marsh C of E Academy
17	All Saints' Thurlestone C of E Academy
18	Charleton C of E Academy
19	West Alvington C of E Academy
20	Dunsford Community Academy
21	Dartington C of E Academy
22	St Michael's C of E Academy



WELCOME FROM TRUST LEAD, TRACEY CLEVERLY

I would like to welcome you to our first Annual Report. The report is designed to provide you with an overview of the achievements and development for the academic year 2021-22.

I am privileged to lead our School Trust and I am incredibly proud of the colleagues who strive, every day, to provide their very best for your child. Our School Trust was formed in 2012 and over the past ten years we have grown cautiously. Each time a school joins our School Trust we are strengthening the capacity and expertise that we can offer your child.

During 2021-22 our School Trust was joined by two new schools. St Michael's C of E Academy, Paignton, opened with its very first cohort of children. In April 2022 Lifton Community Academy joined the School Trust and became the first school in our West Devon Hub.

All that we do is underpinned by our Christian mission: Flourishing Futures and our vision is to provide the very best educational offer which results in improved social mobility within in the South West so that the most disadvantaged children are able to achieve in line with their non-disadvantaged peers. We seek to do this through providing the very best teachers and support staff because this makes the greatest difference to your child's learning journey.

By being a School Trust of 11 schools we have been able to share expertise and excellence across our schools because of the shared responsibility that we all take for every individual child.

We have seen many great achievements this year despite still suffering the impact of the pandemic. This has been possible because we operate as a single organisation – a School Trust. We work together for the benefit of all children and have strong financial management to ensure we invest the maximum amount of funding in your child and their educational offer.

I hope that you enjoy exploring our achievements in this Annual Report. None of this is possible without the support of parents and stakeholders and I would like to thank you for your support and feedback during the 2021-22 period.

Tracey Cleverly
Trust Lead



“By being a School Trust of 11 schools we have been able to share expertise and excellence across our schools because of the shared responsibility that we all take for every individual child.”

WELCOME FROM CHAIR OF TRUSTEES, RICHARD VAUGHTON

They say hindsight is a 20/20 vision, and as Chair of the Trust Board, I have had the privilege over the years of supporting and witnessing the tireless work of all the School Trust staff to ensure the goal of “Flourishing Futures” for all its children and for those whom we can support at a distance is achieved.

You will agree it is not often easy being a parent, and then entrusting your child to a school and a School Trust is an important decision. Well-run, organised and culturally strong School Trusts, such as the Learning Academy Partnership, are an excellent buffer against these cold winds financially and educationally that many schools are facing. This is why the Learning Academy Partnership has been growing and welcoming more schools to its family in 2022 and will see more in 2023. There has never been a better time to work within a strong Trust which can underpin continuity, share expert teaching and invest in your child's future. Strength in numbers has never been needed more in education but is also tempered with local identities.

Whether this is a small local Trust school of fewer than 30 children or a primary of more than 500, the collective educational support and operational and administrative accountability provide a solid foundation for your child's personal growth and development.

Although each school has its identity, we are a single-family Trust that brings together the best, brightest and most passionate staff at the heart of your child's educational and school experience. We do everything we can to ensure the best outcomes for children, but we also wish to be the best employer for aspiring and dedicated teachers and staff who are the daily point of contact for your child.

I witness extraordinary efforts to realise the Trust's ambitions for your child's well-being and education. This is akin to an iceberg analogy and what is seen on the surface hides the supporting structure below. But like an iceberg, it has weight and strength, this School Trust is well-placed to support your child heading into 2023.

Richard Vaughton
Chair of Trust Board

“Well-run, organised and culturally strong School Trusts, such as the Learning Academy Partnership, are an excellent buffer against these cold winds financially and educationally that many schools are facing.”



OUR MISSION, VISION AND CORE VALUES AND BELIEFS

MISSION

Flourishing Futures
(John 10:10 He came so that they may have life and live it to the full).



OUR BELIEFS WE BELIEVE...

We are Stronger Together: we deliver and achieve more than we could ever do individually.



VISION

We will be an exceptional School Trust. We are committed to social mobility and a culture of belonging. We do this by investing in people enabling every child to be taught by the very best teachers so that we can achieve social change and all children flourish.

In a Sense of Belonging: every member of our School Trust matters and knows that they belong.



In Removing Barriers: ensuring that where you begin does not limit your horizons.



VALUES

Empower:
We invest in each other and our communities.

Excel:
We champion opportunity and equality for all and in all that we do.

Together:
We are one team and we agree to work as one family.



In Realising the Possible: you cannot be what you cannot see.



GOVERNANCE TRUSTEES

Richard Vaughton

Chair of Trust Board

Richard's talent is company growth, with a broad range of skills and the ability to think laterally, engage staff creatively, develop new opportunities and establish business partnerships quickly. Richard has a good knowledge of SME company management, as well as large corporation reporting and governance.

Tracey Cleverly

Trust Lead

Tracey was appointed to role of CEO and Trustee in April 2021. Tracey has a 25-year educational career and her experience is deeply rooted in school improvement. Tracey has been with the Trust from the beginning and was originally a Headteacher at Ellacombe Academy. Tracey went on to lead the Teaching School and was Director of Education before taking up the post of Trust Lead.

Reverend Paul Ireton

Reverend Paul holds the office of Trust Incumbent. He has considerable pastoral and educational experience and has had a long association with the Learning Academy Partnership since its conversion to a Multi Academy Trust. Reverend Paul has seen the expansion of the Trust and the sharing of a commitment to first class teaching underpinned at every level by a strong Christian Ethos.

Dr Mark Graves

Mark's career has covered various roles and responsibilities including setting up his own Consultancy business, working as a Design Engineer, co-founding a company to develop x ray and image processing technology for the food sector and CEO of Spectral Fusion Technologies responsible for recruitment and management.

Phil Dean

Phil is an experienced Chief Finance Officer who matches excellent technical skills to incisive commercial awareness. He has 17 years of experience as a Financial Director within multiple sectors across multiple countries enabling him to provide clarity, design strategy and enabling actionable business development.

David Channon

David has held senior leadership positions as Head Teacher, Multi Academy Trust Chief Executive Officer and Diocesan Director of Education. He has worked for two different Local Authority Advisory services. He has taken part in full section 5 inspections of schools in various local authorities. David had been employed by Church and Community schools, in the South West and the Midlands.

Dr Adnan Isin

Adnan is an Assistant Professor of Finance and Accounting at University of Exeter and his research concentrates on advanced-level issues on corporate finance, financial reporting and contract design. Adnan is a strong believer of leverage one can attain via education and that the stronger the foundations of early education the greater the leverage.

Joanne Tisdall

Joanne was Chair of Governors at Dartington C of E Primary School supporting the school community through the academisation process to join the Trust in April 2021. Joanne has spent her professional life working with small to medium-sized companies in the creative and software industries and currently works at the University of Exeter as the Creative Industries Impact and Partnership Manager.

Maria Goodwin

Maria is the CEO of YMCA South Devon, which provides Alternative Education for children and young people that can't access full time mainstream education, and a very busy nursery for babies to pre-school age children. Maria has worked in many different settings with children and young people for over 20 years and strongly believes everyone has a right to quality education and that it is our duty as professionals to make it accessible for them regardless of any disadvantages they might face.

LOCAL GOVERNING BOARDS

Our Local Ethos & Governance Committees contribute to the strategic direction and vision realisation of our School Trust: Flourishing Futures

MEMBERS

- Exeter Diocesan Education Network, Represented by Deborah Eveleigh (Foundation)
- University of St Mark & St John, Represented by Professor Gary Kinchin (Foundation)
- Askel Veur, Represented by Katie Fitzsimmons (Foundation)
- Gavin Booth (Foundation)
- Mark Iddles (Non-Foundation)
- Paul Cornish (Non-Foundation)

TRUST HIGHLIGHTS THIS ACADEMIC YEAR

As a School Trust, a single organisation, we work efficiently to ensure that we can invest money and expertise into the education of the children.

These are some of the large investments and achievements from 2021-22.

£22,500

EARLY YEARS INVESTMENT



£63,200

RESOURCES INTO CLASSROOMS



£445,000

INVESTED IN SCHOOL BUILDINGS



£52,000

PHONICS RESOURCES, TRAINING AND SUPPORT



ILSHAM ENGLISH HUB
SUSTAINED ENGLISH HUB DESIGNATION



TRUST CHARTER
CREATED A PROMISE FOR OUR PUPILS



ONE
NEW SCHOOL JOINED THE TRUST



WRITING
TRUST APPROACH IMPLEMENTED



GOOD
OFSTED JUDGEMENT AT DUNSFORD ACADEMY



EDUCATIONAL OUTCOMES FOR PUPILS

Across our Trust we strive to ensure our children achieve strong academic outcomes.

In 2022 we were above all national benchmarks.

EYFS		
ELG	All (National 62%)	PP (49%)
	78%	63%

YEAR 1 PHONICS	ALL (NATIONAL 75%)	PP (NATIONAL 62%)
	89%	80%
	89%	80%

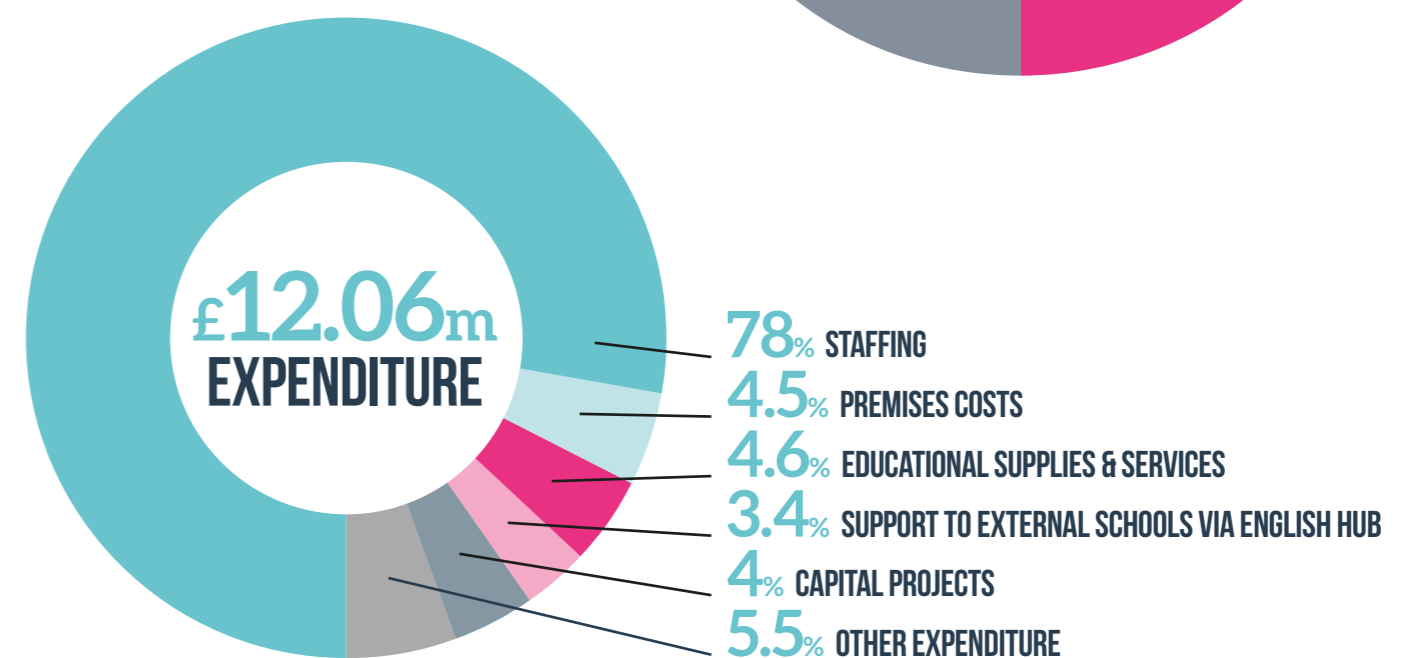
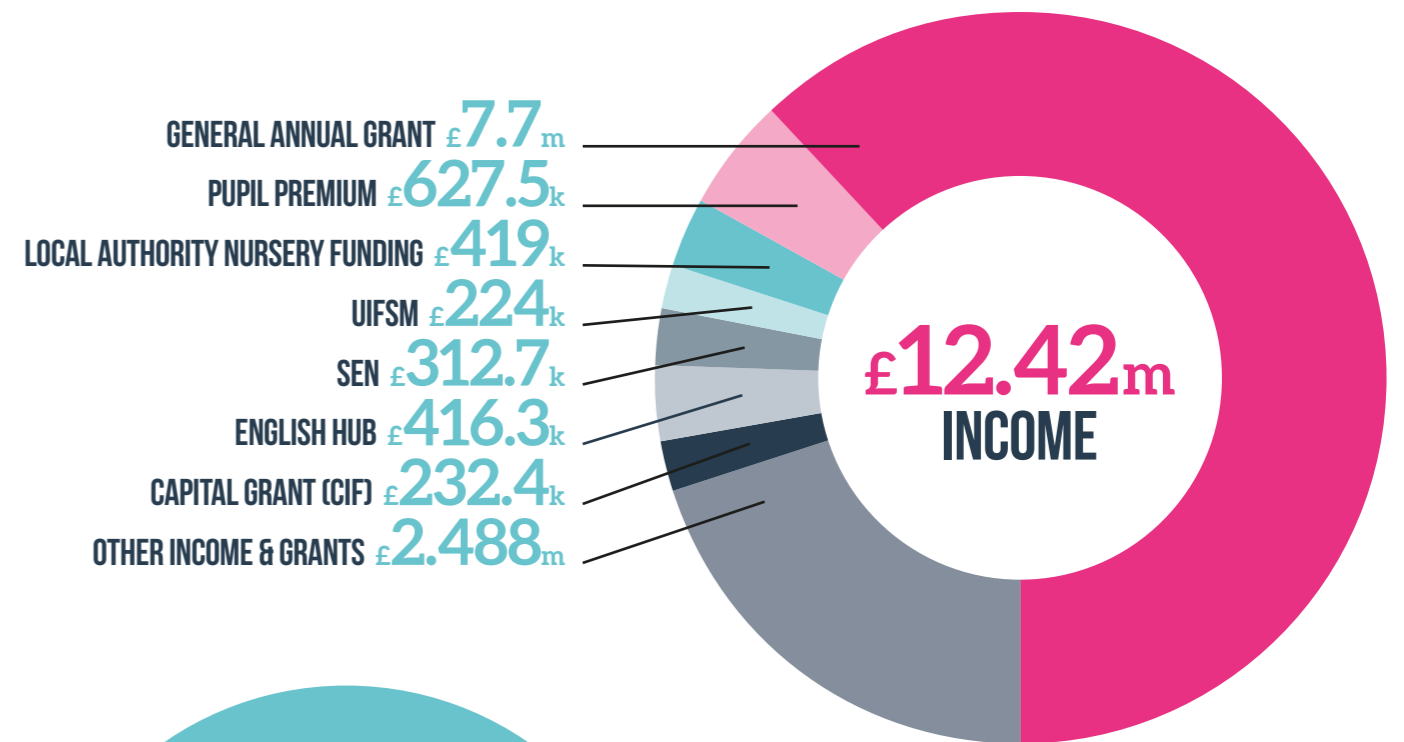
KEY STAGE 1		
	All	PP
Reading	75% (National 67%)	67% (National 51%)
Writing	70% (National 58%)	61% (National 41%)
Math	80% (National 68%)	75% (National 50%)

KEY STAGE 2 EXPECTED		
	All	PP
Reading	78% (National 74%)	69% (National 62%)
Writing	83% (National 69%)	75% (National 55%)
Math	72% (National 71%)	64% (National 56%)
Reading, Writing, Maths Combined	64% (National 59%)	54% (National 43%)

FINANCIAL OVERVIEW

Provided below is an overview of how our Trust is funded and how we utilise this money in order to achieve our vision.

As a Trust we aim to break even and to ensure that our schools have a balanced budget.



OUR JOURNEY

Timeline of schools joining the Trust over the last ten years.

 **363**

Number of staff

 **2258**

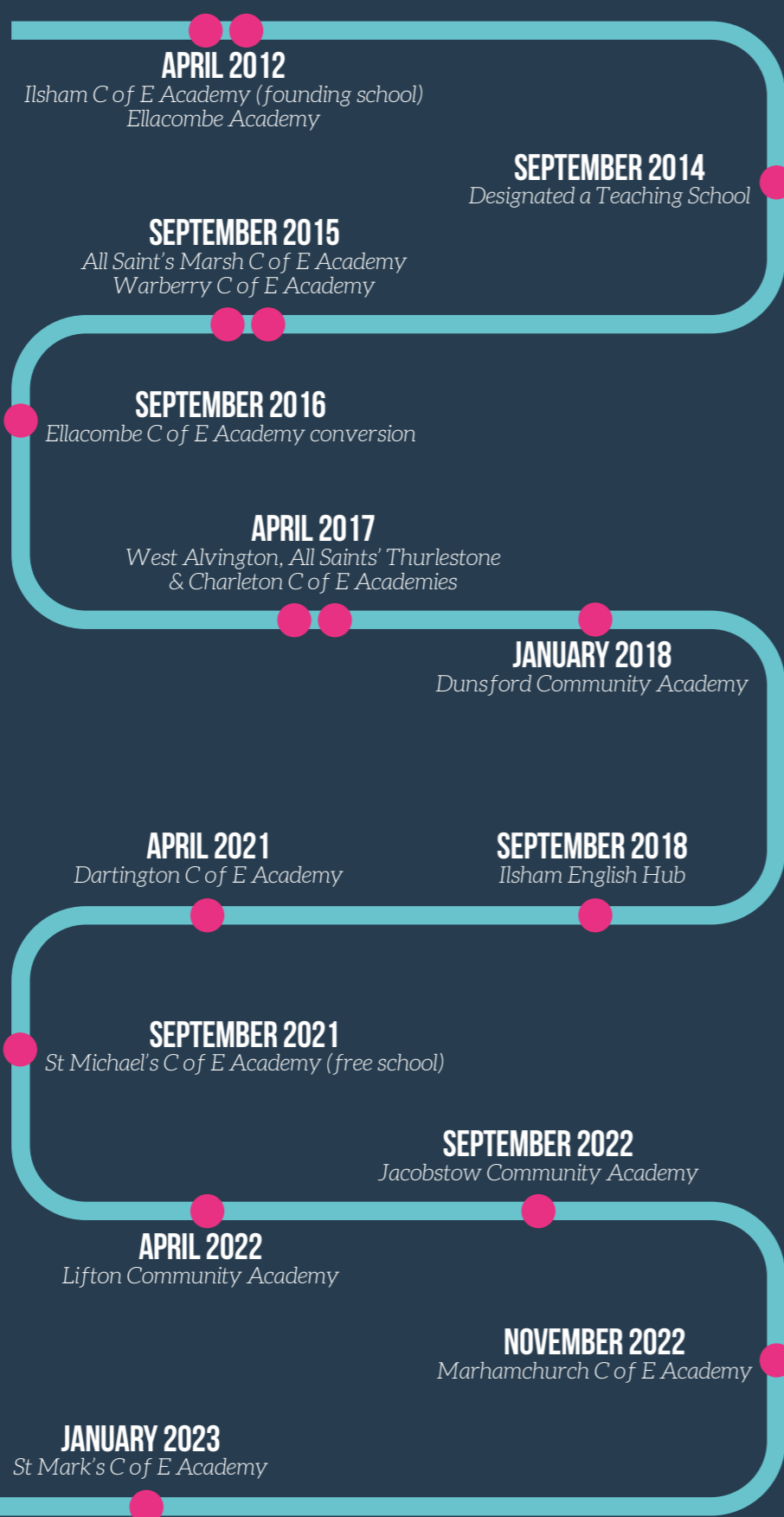
Number of children

 **14**

Number of schools

 **11**

Number of nurseries



100% OF CHILDREN ACHIEVED THE EXPECTED STANDARD IN KEY STAGE 2 IN READING, WRITING AND MATHS



ILSHAM

CHURCH OF ENGLAND ACADEMY

Successes 2021 - 22:

- Stakeholder consultation for creation of the school's Christian vision with children, parents, staff and St Matthias Church.
- 100% of children achieved the expected standard in Key Stage 2 in Reading, Writing and Maths which is significantly higher than the national benchmark of 59%.
- 96% of pupils met the expected standard for phonics in Year 1 and 100% of pupil premium pupils achieved the standard. The national benchmark was 75%.

Events and Awards:

- Introduced a new outdoor learning provision.
- Me and Mrs Jones Child of the Month - hot chocolate and cake kindly offered by the local deli as a celebration of learners.
- Charity and fundraising - a group of Year 4 children made their own bracelets to raise money for Animals in Distress and some Year 5 pupils raised money for The Ocean Clean Up

Plans for the Future:

- Achieving Mental Health Ambassador status to support the wellbeing of our pupils.
- Implementation of the School Trust Charter to enhance the experiences of our children.
- To further embed the school's renewed Christian vision and values

Pupil and Parent Feedback:

- My child loves school, she comes out full of beans and talks positively about everything that happens at school.
- She is very comforted by Christianity and I think it instils great values in her that are important to us as a family.
- My child is exploring some lovely subjects in addition to Maths, English and Science. Forest School is particularly brilliant!

Impact of being part of a School Trust:

- Support with the introduction of a new writing approach from the Trust English Lead.
- Opportunities for our children to collaborate across our Trust schools.
- Designated as a National English Hub and the impact of the development opportunities on our children, across the Trust.
- £3000 additional funding from Trust central funds to support curriculum resources.

To grow and flourish wherever you are planted





ELLACOMBE
CHURCH OF ENGLAND ACADEMY

*Together, we
take steps
towards a
brighter future*



Successes 2021 - 22:

- Attainment at the expected standard in Key Stage 2 in Writing (80%) and Maths (78%) was well above national average.
- The proportion of pupils meeting the expected standard in the Year 1 phonics check was 83% and above the national benchmark of 75%. Vulnerable pupils achieved 87%.
- Collaboration with Torquay Music Hub with a new electric piano installed at Ellacombe and several of our pianists achieving highly at the acclaimed Torbay Music Festival.

Events and Awards:

- Fundraising and partnership with Jay's Aim, to have publicly available Defibrillator installed at school with Year 6 pupils and staff training.
- Pupils in Year 5 and 6 'graduated' as 'mini police' in youth initiative programme with Devon and Cornwall Police.
- Mrs Semmens, as Headteacher, won the 'Employee Ambassador Award' and Ellacombe was awarded 'Highly Commended as a large employer' in support of apprenticeships for staff, through South Devon College at their Apprenticeship Awards.

Plans for the Future:

- Develop Toddler groups and support for pre-school (and pre-nursery) children and families.
- Implementation of the School Trust Charter to provide opportunities to careers education and experiences beyond the taught curriculum.
- To eradicate any legacy from the pandemic through closing any attainment gaps.

Pupil and Parent Feedback:

- 99% of pupils telling us they would talk to an adult in school if they had any worries.
- I am proud of recognising my own health needs and telling the teachers when I do need help.
- 97% of parents said their child is happy at Ellacombe.
- Getting to meet children from other schools within the Trust and build friendships is a great benefit of the Trust.

Impact of being part of a School Trust:

- Large investment from Trust central funds for nurture provision, wellbeing, PSED and Family Support.
- Continued high levels of investment in Early Reading to enable the highest quality early reading provision.
- Additional funding by being part of a Trust to begin an outdoor education provision.

ATTAINMENT AT THE EXPECTED STANDARD IN KEY STAGE 2 IN WRITING (80%) AND MATHS (78%) WAS WELL ABOVE NATIONAL AVERAGE

92% OF PUPILS MET THE EXPECTED STANDARD IN PHONICS AND WERE IN THE TOP 20% IN THE COUNTRY



WARBERRY
CHURCH OF ENGLAND ACADEMY

*Roots to
grow, fruit
to flourish*



Successes 2021 - 22:

- Year 6 writing moderation was successful with 87% of our children achieving the expected level and in the top 20% nationally.
- 92% of pupils met the expected standard in Phonics and were in the top 20% in the country.
- New library has been created with a rich collection of books to support children's love of reading and the curriculum.

Events and Awards:

- Bronze Music Mark awarded by the Devon and Torbay Music Hub for high quality music provision.
- Whole school PE lesson by Joe Wicks as a reward for Warberry's fundraising efforts over the years for Children In Need.
- Successful production of 'The Lion King' performed by our Year 6 children supported by Year 5 at The Spires College.

Plans for the Future:

- Implementing the School Trust Charter to enhance the curriculum and provide a wealth of personal development opportunities for our children.
- Raising attainment in Mathematics at the end of Key Stage 2.
- Introduction of an Ethos group and School Council to support us to live our vision and values in all that we do.

Pupil and Parent Feedback:

- Warberry are so lucky to have such amazing teachers, you can tell they are genuinely passionate about their jobs and love the children. They have made my daughter's start to school life so enjoyable, fun and exciting yet challenging and educational.
- Thank you for all your support with my daughter, throughout her time at Warberry, she has loved every year and no doubt will miss her time there. Thank you.
- I think that teachers give constructive and helpful feedback to improve our learning. That is good because we can get better every day.

Impact of being part of a School Trust:

- Additional £6,725 given to support PE provision across the school.
- Opportunities for our teachers to specialise and support the Ilsham English Hub.
- Opportunities for our children to collaborate with children from across the Trust on trips and residential.



**Building
Lifelong
Foundations
Together**



Successes 2021 - 22:

- 81% of children achieved the Year 1 Phonics Screening, well above the national benchmark of 75%.
- 71% of children at the end Key Stage 2 achieved the expected standard in writing which was above the national benchmark of 69%.
- Embedded our 'Reading for Pleasure' curriculum which included installing a new library.

Events and Awards:

- 7 pupils completed The Civic Award and attended a ceremony.
- Awarded Holiday Activity Fund to support disadvantaged children access activities and support during the holidays.
- Donated over 300 books to Lwendulu School in Zimbabwe and raised over £700 for Children's Hospital Southwest.

Plans for the Future:

- Embed the School Trust Charter so that all curriculum areas are enhanced by experiences that allow children to flourish and see what the world has to offer.
- Focus on attendance to ensure that 98% is achieved by all.
- Achieve a Good SIAMS inspection to reflect the strength of Christian distinctiveness.

Pupil and Parent Feedback:

- I would recommend All Saints Marsh to others, I love the variety of extracurricular activities that are on offer to enrich the children's education.
- My child has really increased in confidence this year and has thrived on the positive encouragement given by all staff.
- My children have loved meeting and getting to know the children from other Trust schools.

Impact of being part of a School Trust:

- Access to Dartington Music Hub event for Year 3 alongside Dartington C of E Academy and Ellacombe C of E Academy.
- Access to Ilsham English Hub Reading for Pleasure training. All children are reading at home with parents.
- Re-vamp of library reading corners supported by Trust English Lead to ensure all high-quality texts and funded by being part of a School Trust.

81% OF CHILDREN ACHIEVED THE YEAR 1 PHONICS SCREENING, WELL ABOVE THE NATIONAL BENCHMARK OF 75%

FIRST SCHOOL IN THE TRUST TO GAIN THE BRONZE 'FOOD FOR LIFE' AWARD



**Together
we shine like
stars reflected
in the sea**



Successes 2021 - 22:

- As a result of our RWInc Phonics approach, and a member of the team being an English Hub specialist, 92% of children achieved the Year 1 Phonics Screening Test, above the national benchmark of 75%.
- Following the introduction of the Trust writing approach, 80% of children met the expected standard in writing at KS2 and 20% of children gained the higher standard. These results were moderated by the Local Authority.
- Appointed a Family Support Worker to support families and children across the Hub.

Events and Awards:

- First school in the Trust to gain the bronze 'Food for Life' award.
- Awarded Holiday Activity Funding to support disadvantaged children across 3 schools in our Hub during the holidays.
- Children experienced a number of events to support their learning, including paddle boarding, sailing, theatre trips and First Aid courses.

Plans for the Future:

- In conjunction with the Friends of Thurlestone, develop an outside learning area to include an outside shelter and classroom.
- Ensure that the School Trust Charter is embedded into our curriculum and that the children get a wide range of personal development opportunities encompassing sport, music, drama and cultural opportunities.
- To continue to raise attainment for children in EYFS post-pandemic.

Pupil and Parent Feedback:

- In the parent questionnaire, 96% of parents said that their child was happy and safe at All Saints' Thurlestone.
- Just a quick thank you to all the teachers/whoever is organising all the fantastic extracurricular activities this term. It seems to have been non-stop with exciting extra stuff for them to do. Lucky children! Thank you!
- In the pupil survey, 99% of children felt proud to be a pupil of Thurlestone and 93% of children understood how the school values helped them to live together as a school community.

Impact of being part of a School Trust:

- Support from the Trust English Lead to implement a new writing approach.
- Opportunity to work as a local Hub of schools which provides increased capacity and opportunities to provide a strong curriculum offer for the children.
- £2300 from the Trust to support curriculum resources.



Holding hands, striding forward, flourishing together



Successes 2021 - 22:

- Key Stage 2 Reading was 91% at the expected standard and 36% greater depth. This was significantly above the national benchmark for the expected standard which was 74%.
- 80% of children achieved a Good Level of Development at the end of Reception which was above the national benchmark of 65%.
- Our Eco Team has had a positive impact on the local community through beach cleans, village litter picks, championing recycling in school, learning about the importance of bees to the eco system and working with local charities and community groups.

Events and Awards:

- Awarded the Soil Association Bronze Food for Life Award.
- Awarded Holiday Activity Funding to support disadvantaged children across 3 schools in our Hub.
- Children in KS2 completed the RYA on board sailing programme.

Plans for the Future:

- Implementation of the School Trust Charter to enhance the experiences of our children.
- Continuing to work closely with our community and enhancing the curriculum offer for our children.
- To further embed the school's Christian vision and values working alongside our community and our new vicar.

Pupil and Parent Feedback:

- 100% of parents said their child was happy at the school.
- 100% of parents said their child does well at the school.

Impact of being part of a School Trust:

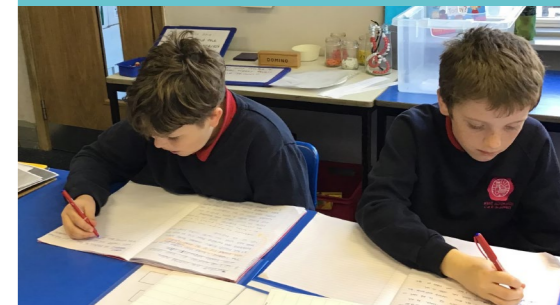
- Support from our Trust English Lead with the introduction of a new writing approach.
- Educational Psychology Trust offer supports our SEND pupils and families.
- Hub SENDCo and Family Support Worker supported by additional funding from being part of a Trust.

CHILDREN IN KS2 COMPLETED THE RYA ON BOARD SAILING PROGRAMME

75% OF CHILDREN IN EYFS ACHIEVED A GOOD LEVEL OF DEVELOPMENT WHICH IS ABOVE THE NATIONAL BENCHMARK OF 65%



Growing and flourishing together



Successes 2021 - 22:

- Children in Key Stage 1 achieved above national averages in Reading, Writing and Mathematics.
- 75% of children in EYFS achieved a Good Level of Development which is above the national benchmark of 65%.
- Appointed a Family Support Worker to support families and children across the school.

Events and Awards:

- The school was awarded the Soil Association Bronze Food for Life Award.
- Awarded Holiday Activity Funding to support disadvantaged children across 3 schools in our Hub.
- Children in KS2 completed the RYA on board sailing programme.

Plans for the Future:

- Implementation of the School Trust Charter to enhance the experiences of our children, including careers education.
- Continuing to work closely with our community and enhancing the curriculum offer for our children.
- Ensure attendance is at 98%.

Pupil and Parent Feedback:

- 100% of parents said their child was happy in school.
- 100% of parents would recommend the school.
- My child had not been able to make it into school due to anxiety but with massive support, time, and understanding, school is now also seen as a safe place to be.

Impact of being part of a School Trust:

- £124K investment from the Trust to provide a new roof and windows.
- Support from our Trust English Lead with the introduction of Jane Considine writing approach.
- Opportunities for our children to collaborate across the Hub in sporting activities, residential and sharing curriculum experiences such as Exeter Chiefs visit.



*To aspire,
be brave and
thoughtful*



Successes 2021 - 22:

- 'Good' rating in Ofsted in May 2022 capturing the impact of staff in the Early Years and the high quality of education outcomes with 83% achieving Reading, Writing and Maths at the end of Year 6.
- Successfully implementing Read Write Inc across the school.
- In KS2 75% of children achieved the expected standard in Reading, Writing Maths combined, above the national benchmark of 59%.

Events and Awards:

- 'Bat watch' - pupils watching some 100 resident pipistrelle bats emerge from our 'Batcave' at the top of the school building and measuring their 'squeaks' with sound monitors.
- Our community swimming pool, raising funds at the Dunsford Show and providing a pool during the summer for our children and families.

Plans for the Future:

- Going for our 'Green Flag' award alongside our new Eco Committee, reflecting our school vision.
- Embed Seesaw to support home school links and supporting accessibility for the best possible learning for all pupils
- Embedding our Trust Core offer ensuring pupils access a wide range of out of school experiences.

Pupil and Parent Feedback:

- 92% of pupils were proud of their school and proud of its place in the community.
- 94% of pupils said if they were worried about something they had someone to talk to.
- Teachers make learning fun like Mrs Wood's French lesson which was really good.

Impact of being part of a School Trust:

- £8000 investment from central Trust funds to refresh our EYFS provision.
- An additional £3000 of curriculum funding to enhance the school resource budget.
- High-quality support from specialists, across the School Trust family, to support our teachers and leaders implement a high-quality curriculum offer for pupils.

**SUCCESSFULLY
IMPLEMENTING READ WRITE
INC ACROSS THE SCHOOL**

89% OF CHILDREN ACHIEVED THE YEAR 1 PHONICS SCREENING



*Together we
grow, together
we flourish*



Successes 2021 - 22:

- 89% of children achieved the Year 1 Phonics Screening which was well above national benchmark of 75%.
- At KS2 children made 'well above average' progress in Reading and Writing and 'above average progress' in Mathematics.
- Additional opportunities developed to enrich the children's experience. For example, scuba diving sessions, catch-up swimming lessons, sailing lessons, mountain biking lessons and whole class music lessons.

Events and Awards:

- Silver Music Mark awarded by the Devon and Torbay Music Hub for high quality music provision.
- Silver Stories invite for the children involved to meet the Queen Consort, Her Majesty Camilla, in Cornwall for afternoon tea.
- Awarded special funding for Dartington children to work with other Trust schools and national musician Jason Singh who composed the music for Sir David Attenborough's Green Planet advert.

Plans for the Future:

- Raising attendance to over 98%.
- Embed the School Trust Charter to enhance our curriculum with rich personal development opportunities for all children to level the playing field for our most vulnerable and enable all children to realise the possible.
- Continue to close the gaps for our most vulnerable pupils and raise attainment for all.

Pupil and Parent Feedback:

- My child's teacher has been absolutely amazing at seeing children as individuals and treating them in ways that best support them and help them thrive. Personal development is so important."
- My child moved from another school and he is transformed.
- Sports opportunities are great. More art is being taught now which is brilliant!

Impact of being part of a School Trust:

- Opportunities for academy-to-academy pupil collaboration and shared learning. Visits from other schools to Dartington and Year 4 children at Ilsham sharing their work as Water Safety Ambassadors to our pupils.
- Supporting the delivery of Ilsham English Hub, enabling staff to specialise in areas.
- Impact on the children in EYFS from the additional £8000 invested by the Trust to enhance the outdoor provision.



ST MICHAEL'S

CHURCH OF ENGLAND ACADEMY

*The future
we create
every day*



Successes 2021 - 22:

- Opened as a new free school for Paignton in September 2021 with a cohort of Nursery and Reception children.
- 80% of children reached a Good Level of Development, well above national benchmark of 65%.
- Parent partnership further strengthened with parents setting up a new PTA and hosting jubilee and summer events.

Events and Awards:

- Our families attending a 'Booknic' in school was celebrated in the press; demonstrating both our focus on promoting a love of books and the engagement of our families.
- We supported children in Ukraine with our families donating items for shoe boxes to be delivered to children in Ukraine through a local charity.
- Opportunities to explore our local area with a trip on the Steam Train from Paignton to Kingswear and the ferry to Dartmouth.

Plans for the Future:

- Develop the School Trust Charter to give our children the opportunities and experiences that allow them to aspire for their future.
- Continue to develop our Christian vision and values as the school grows, building on our relationship with Paignton Parish.
- Strengthening community links with local visits to Paignton Zoo, Paignton Geo- Park, Beach School and work with Coast and Country.

Pupil and Parent Feedback:

- 100% of our families say their child is happy at school and would recommend a Trust school to another parent.
- I don't think we could have picked a better school if we had tried.
- We couldn't be prouder of his progression, so we thank you all for your care and love that you have given to our little boy. Choosing this school has probably been the best decision we have ever made, it's now his second home, his second family.

Impact of being part of a School Trust:

- The opportunities to share provision and practice with teachers and schools across our Trust.
- A network of support from schools and the Trust central teams ensure the smooth running of the school, allowing us to focus on teaching and learning as well as supporting new staff as they join the school.
- Our Hub partnership with Dartington gives us a shared approach to delivering the curriculum and further opportunities to explore the creative arts and regularly attend Forest School.

**OPENED AS A NEW FREE SCHOOL FOR
PAIGNTON IN SEPTEMBER 2021**



learning
academy
partnership

Learning Academy Partnership

Suite 4 Zealley House, Greenhill Way, Kingsteignton, Devon. TQ123SB

Tel: 01626 248800
Email: partners@lapsw.org
Website: <https://lapsw.co.uk>
Twitter: <https://twitter.com/LAPacademies>
LinkedIn: <https://www.linkedin.com/company/learning-academy-partnership>